

SpaceLogic KNX

DALI Gateway Pro

Software update

The following document shows how to update an existing DALI Gateway to the new firmware version 2.1

MTN6725-0101

2024/09



Update existing gateways



Existing DALI Gateways can be updated with the new firmware by using the DFU tool. The update is a firmware major update from 1.xx to 2.xx. By performing an update **all** data in the gateway will be deleted.

An update would be required if, for example, the new features are to be used, the IP interface is to be used, or a security update is required.

An existing project can be updated without commissioning the ECGs again, and without doing the parameter setting and group address assignments again. However: DALI-2 motions sensors must always be configured and commissioned/identified again.

How to update

Step 1 – 4
One-time pre-work

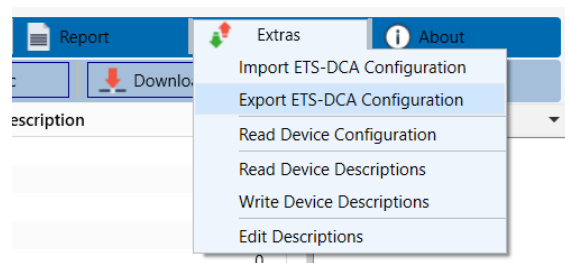
The preliminary work

- 1 Create a backup copy of your ETS project
- 2 Install the new ETS DCA version 2.0.1.0 in the ETS
- 3 Import the product database or use the ETS online catalog
- 4 Insert a single new KNX DALI Gateway application 7311/2.0 in the project anywhere. This is only needed for the following steps and can be deleted afterwards.

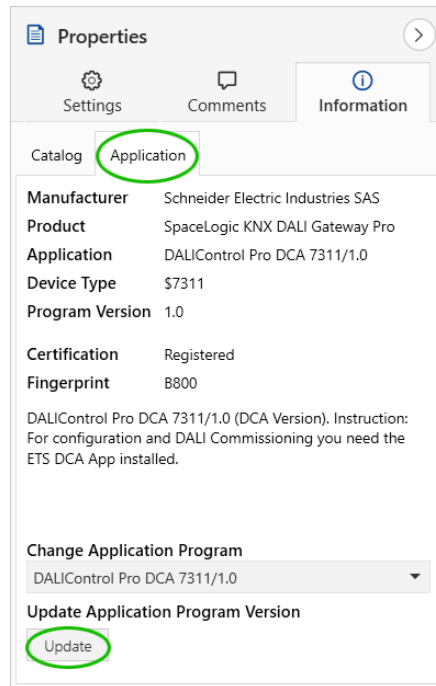
Step 5 – 14
On each device

Work that must be performed on each device

- 5 Update the version 1 gateway to firmware 2.0.2 using the DFU tool. All data incl. the individual address will be deleted from the device.
- 6 After firmware update, go to the ETS DCA of the version 1 gateway and select: **Extras -> Export ETS-DCA Configuration** and save the file in a folder.



- 7 In the ETS side menu select the version 1 gateway and go to **Properties -> Information -> Application**



- 8 Click the **Update** button.
The application is changed, and the parameter settings and group addresses are kept, but the DCA data is deleted.

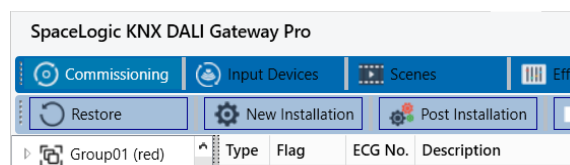


Do **not** change the application program in the listbox. It will change the application program too but reset all parameter and delete all group address assignments

- 9 Download the individual address
10 Go to the ETS DCA (which now is version 2.0.1.0) and select **Extras -> Import ETS-DCA Configuration** and select the stored file
11 Click on the Restore button in the ETS DCA to transfer all data to the gateway.



Restore must be used when the gateway is empty, using **Download** from the ETS DCA doesn't do the full job.



- 12 Configure and commission DALI-2 input devices, if any
13 Download the ETS application
14 Finished! If more gateways are to be updated, go back to point 5.

How to update the Firmware

- The Firmware update is done via the Ethernet port of the device
- If the GW is not already used in a network, the port must be enabled and configured in ETS
 - Either configure a fixed IP address (then the PC must also use a fixed address)
 - ... or set it to DHCP (then the PC also must have DHCP). By connection the gateway and PC will negotiate automatic IP addresses (169.x.x.x). The address can be seen in the display of the GW by pressing the "Move" button and then the "Frg Set" button.
- Set a PIN code for FW update
- Download the application to the gateway

- Connect the PC to the gateway with a standard patch cable
- Use any common web-browser (Chrome, **Firefox**, Edge) to check access using **https://<IP address of the GW>**
- Bypass the security message given by the browser
- Login with user name **admin** and password **dali**. You are asked to change the password by first access (remember it)



Your connection is not private

Attackers might be trying to steal your information from 192.168.1.50 (for example, passwords, messages, or credit cards). [Learn more](#)

NET-ERR_CERT_AUTHORITY_INVALID

To get Chrome's highest level of security, [turn on enhanced protection](#)

Hide advanced

Back to safety

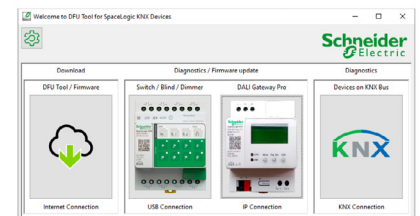
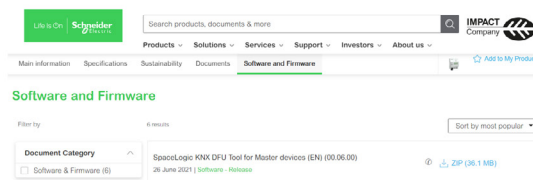
This server could not prove that it is 192.168.1.50; its security certificate is not trusted by your computer's operating system. This may be caused by a misconfiguration or an attacker intercepting your connection.

Proceed to 192.168.1.50 (unsafe)

- Logout (as only one client can be logged in at the same time)

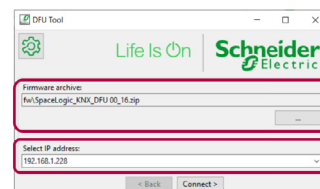
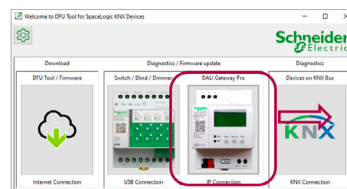
Download the Device Firmware Update Tool from se.com, install and run it

https://download.schneider-electric.com/files?p_Doc_Ref=Space_Logic_KNX_DFU_Tool

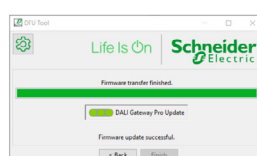


Download the latest Firmware from se.com

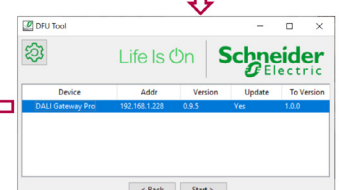
https://download.schneider-electric.com/files?p_Doc_Ref=Space_Logic_KNX_DFU_Firmware



Note: You first have to login as admin and change the default password via a web-browser. You may not be logged in via the browser when doing the upgrade (only 1 admin session allowed)



The PIN-code must be entered in the parameters in ETS and the device must be downloaded



Schneider Electric SE

If you have technical questions, please contact the
Customer Care Centre in your country.
se.com/contact

© 2023 Schneider Electric, all rights reserved